



SolarBuddy
Background Information

Our Story

SolarBuddy was founded by Simon Doble, an inventor and social impact entrepreneur, who specialises in creating innovative solar energy solutions for the humanitarian, off-grid sector. In 2011, Simon came across a disturbing article in Time magazine about energy poverty being the worst kind of poverty. This article resonated deeply with him and he felt compelled to do something about it, which took him on a journey that eventually led to the creation of SolarBuddy.

About SolarBuddy

SolarBuddy is an Australian charity uniting a global community to illuminate the futures of all children.

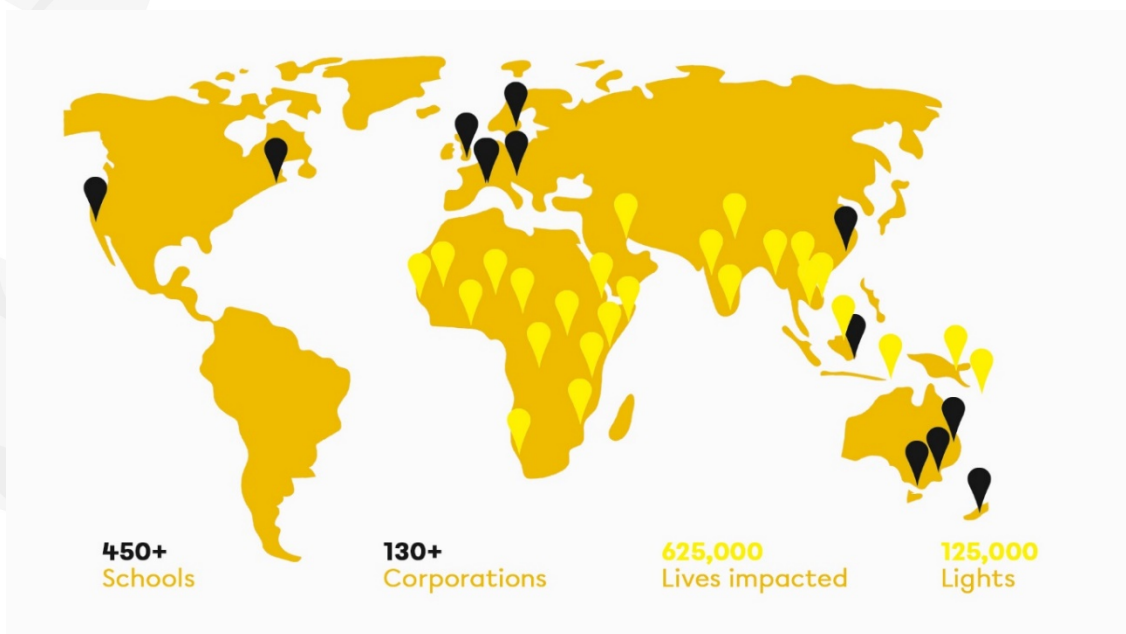
One of the biggest obstacles we face is extreme energy poverty. It is a complex challenge, impacting the health and well-being, educational outcomes, and economic stability of the communities experiencing it as well as our environment.

Despite this, we are motivated by big challenges, and the impact we can make by working towards achieving our two goals. Firstly, to gift six million solar lights to children living in extreme energy poverty by 2030, while simultaneously, educating six million people globally about extreme energy poverty.

By achieving these two goals, this is the impact we are having:

- Up to 30 million people's lives can be uplifted out of extreme energy poverty to have more equitable opportunities for a brighter future.
- 12 million people understand the crisis of extreme energy poverty and have the potential to help and advocate for positive change.

With help of our corporate and education partners, we are having an incredible impact!



ABN: 56612567825
Address: 1/36 Wyandra Street,
Newstead, Queensland 4006

www.solarbuddy.org
Phone: +61 7 3257 7380
Email: enquiries@solarbuddy.org

@Copyright of SolarBuddy.org.
Not to be distributed without
written consent of SolarBuddy.

What are the SDGs?

The 17 Sustainable Development Goals (SDGs) were ratified in 2015 by 193 world leaders at the United Nations General Assembly. They are a universal call to action by all countries to end all forms of poverty, fight inequalities and tackle climate change while ensuring that no one is left behind. We have aligned our agenda with the SDGs using a model for engagement that combines education with innovation for social good. Our key areas of focus are Global Goals #3 Good Health, #4 Quality Education, #7 Affordable and Clean Energy, #13 Climate Action, and #17 Partnerships for the Goals.

What is extreme energy poverty?

Extreme energy poverty is defined as a lack of access to clean, reliable and affordable grid-based energy sources that meet basic domestic needs.

Every night, **789 million people** worldwide are plunged into complete darkness. To light their way through the night they depend on primitive forms of energy like charcoal and firewood or harmful fuel-based sources like kerosene.

The impact of extreme energy poverty is profound, it leads hundreds of millions of people to darkness, ill health, unfulfilled futures and contributes to the cycle of poverty. There is a direct relationship between poverty and the lack of access to affordable and reliable energy services.

Communities without access to reliable and affordable energy spend a significant amount of their limited income on inefficient and expensive energy sources. In addition, sourcing fuel for their energy requirements can be both strenuous and time consuming which reduces the amount of time they can devote to their work or education. Education is key to breaking the cycle but for many students living in extreme energy poverty, studying is limited to daylight hours.

Our Solution

Our solution is to educate and illuminate.



Education is core to the solution. It helps to build local awareness and understanding of extreme energy poverty, creates better global citizens, and is the most important factor in creating equitable opportunities for a child.



We are **illuminating** communities through innovative solar solutions that are simple, socially impactful, environmentally sustainable and make a difference for a decade not a day.



ABN: 56612567825
Address: 1/36 Wyandra Street,
Newstead, Queensland 4006

www.solarbuddy.org
Phone: +61 7 3257 7380
Email: enquiries@solarbuddy.org

@Copyright of SolarBuddy.org.
Not to be distributed without
written consent of SolarBuddy.

Our programs are designed to encourage collaboration, creative and critical thinking, and to inspire participants to think about how a simple solution - like a solar light - can make a big difference.

JuniorBuddy

SolarBuddy's JuniorBuddy Program has been specifically designed to combine learning with practical application and is suitable for children and adults alike. Our model is **Learn, Make, Illuminate**.



First, participants **learn** about extreme energy poverty, renewable technologies and global citizenship.



Participants then **make** our JuniorBuddy light and write a personal letter to be gifted to a child with the light.



This light and letter will **illuminate** the life of a child living in extreme energy poverty for 10 years.

Our JuniorBuddy light has been designed with purpose, specifically with children in mind. It has been made easy to use, operate, carry and charge. It has four holes in each corner so that it can be hung from the ceiling or attached to a child's body or backpack whilst walking or cycling to school for easy use and recharge. It has been intentionally humanised with eyes, arms and feet making it more accessible and 'friendly' to children unfamiliar with solar technology. That's why it's called 'BUDDY'



ABN: 56612567825
Address: 1/36 Wyandra Street,
Newstead, Queensland 4006

www.solarbuddy.org
Phone: +61 7 3257 7380
Email: enquiries@solarbuddy.org

@Copyright of SolarBuddy.org.
Not to be distributed without
written consent of SolarBuddy.

Solve The 17

Centred around the United Nations Sustainable Development Goals (SDGs), participants will collaborate in teams to discover, define, develop, design and deliver a solution to one of 17 SDGs. This Global Innovation Challenge has been customised for students and corporates.

Corporate Program

Solve The 17 (for corporates) is flexible and can be aligned with your organisation's SDGs values. Running over Zoom, the format we have created offers a much-needed tonic for 'Zoom Fatigue'! Presented with a problem related to one of the 17 SDGs, teams brainstorm and share ideas, ultimately deciding on the solutions they will present. They collaborate to create a short, persuasive presentation and showcase it to everyone back in the room. And for every program completed, 25 JuniorBuddy lights are donated to children living in extreme energy poverty.

Student Program

Schools Solve The 17 was created by educators, aligned to ACARA, and is a project-based, student-led program tailored for students in years 7 to 12. Working in a classroom format, students work in teams of 3-6 to complete five fun activity posters that will guide them to create a unique solution to their year-specific SDG challenge.

Monitoring and Evaluation

We work closely with our in-country partners to track the effectiveness of our program and measure: the number of hours children spend studying after dusk; increased educational outcomes; reduction in the use of kerosene; and improvements to the children's overall health and wellbeing.

The good news is we know our lights are changing lives! A recent impact assessment conducted by our field partners showed that:



Children are spending less time collecting firewood for cooking and heating and more time attending class, studying and completing their homework resulting in improved learning outcomes. Our Monitoring and Evaluation Reports have shown an up to 78% increase in study time!



Families are spending 80% less of their limited income on expensive kerosene for lighting.



Women and girls have also reported an increased sense of safety as they navigated around their communities and visited the latrine at night.



Families have reported spending more time together in the evening.



ABN: 56612567825
Address: 1/36 Wyandra Street,
Newstead, Queensland 4006

www.solarbuddy.org
Phone: +61 7 3257 7380
Email: enquiries@solarbuddy.org

@Copyright of SolarBuddy.org.
Not to be distributed without
written consent of SolarBuddy.

Where do our lights go?

Once the lights have been assembled, we collect them, along with the handwritten letters of encouragement, and distribute them to children in partner communities living in extreme energy poverty. Our in-country partners make sure the lights reach the children who need them most, which means they often travel huge distances to get to some of the most off-grid communities in the world. We are currently consolidating our programs in Tanzania, the Dominican Republic, Papua New Guinea, Vanuatu, Timor-Leste, Cambodia and India to enhance our impact and streamline data collection.



Thank you!

Thank you for joining our global community of light givers, we couldn't be more grateful. Please follow us on social media and sign up to receive our newsletter at solarbuddy.org to hear how your gift of light is helping to illuminate the futures of children living in extreme energy poverty.



ABN: 56612567825
Address: 1/36 Wyandra Street,
Newstead, Queensland 4006

www.solarbuddy.org
Phone: +61 7 3257 7380
Email: enquiries@solarbuddy.org

@Copyright of SolarBuddy.org.
Not to be distributed without
written consent of SolarBuddy.